

### Standard Aquatic Vegetation Summary Sheet

		Total number of AVAS's for each Density Category				Calculations				Sum of Columns 5-8	Total No. of AVAS	Col 9 divided by Col 10
Code No	Plant Name	A	B	C	D	A x 1	B x 10	C x 40	D x 80	9	10	11
1	Eurasian watermilfoil	0	0	0	0	0	0	0	0		380	
2	Curly leaf pondweed	0	0	0	0	0	0	0	0			
3	Chara	47	9	0	0	47	90	0	0	137	380	0.36
4	Thinleaf pondweed	1	1	0	0	1	10	0	0	11	380	0.03
5	Flatstem pondweed	2	1	0	0	2	10	0	0	12	380	0.03
6	Robbins pondweed	0	1	0	0	0	10	0	0	10	380	0.03
7	Variable pondweed	15	1	0	0	15	10	0	0	25	380	0.07
8	White stem pondweed	35	6	0	0	35	60	0	0	95	380	0.25
9	Richardsons pondweed	4	2	0	0	4	20	0	0	24	380	0.06
10	Illinois pondweed	4	0	0	0	4	0	0	0	4	380	0.01
11	Large leaf pondweed	6	1	0	0	6	10	0	0	16	380	0.04
12	American pondweed	0	0	0	0	0	0	0	0			
13	Floating leaf pondweed	0	0	0	0	0	0	0	0			
14	Water stargrass	0	0	0	0	0	0	0	0			
15	Wild celery	1	0	0	0	1	0	0	0	1	380	0.00
16	Sagittaria (submersed)	0	0	0	0	0	0	0	0			
17	Northern watermilfoil	0	0	0	0	0	0	0	0			
18	Rush	0	0	0	0	0	0	0	0			
19	Variable leaf watermilfoil	0	0	0	0	0	0	0	0			
20	Coontail	1	0	0	0	1	0	0	0	1	380	0.00
21	Elodea	0	0	0	0	0	0	0	0			
22	Bladderwort	0	0	0	0	0	0	0	0			
23	Mini Bladderwort	0	0	0	0	0	0	0	0			
24	Buttercup	0	0	0	0	0	0	0	0			
25	Naiad	11	6	2	0	11	60	80	0	151	380	0.40
26	Brittle naiad	0	0	0	0	0	0	0	0			
27	Sago Pondweed	0	0	0	0	0	0	0	0			
28	Starry Stonewort	0	0	0	0	0	0	0	0			
29	Cabomba	0	0	0	0	0	0	0	0			
30	Water Lily	4	4	3	3	4	40	120	240	404	380	1.06
31	Spatterdock	1	0	0	0	1	0	0	0	1	380	0.00
32	Water shield	0	0	0	0	0	0	0	0			
33	Common Duckweed	0	0	0	0	0	0	0	0			
34	Greater duckweed	0	0	0	0	0	0	0	0			
35	Watermeal	0	0	0	0	0	0	0	0			
36	Arrowhead	0	0	0	0	0	0	0	0			
37	Pickerelweed	0	0	0	0	0	0	0	0			
38	Arrow arum	0	0	0	0	0	0	0	0			
39	Cattail	3	3	2	0	3	30	80	0	113	380	0.30
40	Bulrush	10	2	3	0	10	20	120	0	150	380	0.39
41	Iris	0	0	0	0	0	0	0	0			
42	Swamp loosestrife	0	0	0	0	0	0	0	0			
43	Purple loosestrife	8	0	0	0	8	0	0	0	8	380	0.02
44	Phragmites	0	0	0	0	0	0	0	0			
45	Frogbit	0	0	0	0	0	0	0	0			
46	Slender spikerush	0	0	0	0	0	0	0	0			
47	Smartweed	0	0	0	0	0	0	0	0			
48	Water marigold	0	0	0	0	0	0	0	0			
49	American lotus	0	0	0	0	0	0	0	0			
50		0	0	0	0		0	0	0			

**Total cumulative cover**

**3.06**

### Standard Aquatic Vegetation Summary Sheet

Code No	Plant Name	Total number of AVAS's for each Density Category				Calculations				Sum of Columns 5-8	Total No. of AVAS	Col 9 divided by Col 10
		A	B	C	D	A x 1	B x 10	C x 40	D x 80	9	10	11
1	Eurasian watermilfoil	15	7	1	0	15	70	40	0	125	642	0.19
2	Curly leaf pondweed	0	0	0	0	0	0	0	0			
3	Chara	565	43	24	0	565	430	960	0	1955	642	3.05
4	Thinleaf pondweed	12	3	0	0	12	30	0	0	42	642	0.07
5	Flatstem pondweed	8	1	0	0	8	10	0	0	18	642	0.03
6	Robbins pondweed	3	0	0	0	3	0	0	0	3	642	0.00
7	Variable pondweed	25	15	0	0	25	150	0	0	175	642	0.27
8	White stem pondweed	5	5	0	0	5	50	0	0	55	642	0.09
9	Richardsons pondweed	63	13	0	0	63	130	0	0	193	642	0.30
10	Illinois pondweed	29	0	0	0	29	0	0	0	29	642	0.05
11	Large leaf pondweed	40	6	1	0	40	60	40	0	140	642	0.22
12	American pondweed	0	0	0	0	0	0	0	0			
13	Floating leaf pondweed	0	0	0	0	0	0	0	0			
14	Water stargrass	0	0	0	0	0	0	0	0			
15	Wild celery	10	5	0	0	10	50	0	0	60	642	0.09
16	Sagittaria (submersed)	0	0	0	0	0	0	0	0			
17	Northern watermilfoil	0	0	0	0	0	0	0	0			
18	Rush	0	0	0	0	0	0	0	0			
19	Variable leaf watermilfoil	0	0	0	0	0	0	0	0			
20	Coontail	0	0	0	0	0	0	0	0			
21	Elodea	10	5	1	0	10	50	40	0	100	642	0.16
22	Bladderwort	13	1	0	0	13	10	0	0	23	642	0.04
23	Mini Bladderwort	0	0	0	0	0	0	0	0			
24	Buttercup	0	0	0	0	0	0	0	0			
25	Naiad	229	56	24	0	229	560	960	0	1749	642	2.72
26	Brittle naiad	1	0	0	0	1	0	0	0	1	642	0.00
27	Sago Pondweed	15	0	0	0	15	0	0	0	15	642	0.02
28	Starry Stonewort	0	0	0	0	0	0	0	0			
29	Cabomba	0	0	0	0	0	0	0	0			
30	Water Lily	2	4	15	0	2	40	600	0	642	642	1.00
31	Spatterdock	1	0	0	0	1	0	0	0	1	642	0.00
32	Water shield	0	0	0	0	0	0	0	0			
33	Common Duckweed	0	0	0	0	0	0	0	0			
34	Greater duckweed	0	0	0	0	0	0	0	0			
35	Watermeal	0	0	0	0	0	0	0	0			
36	Arrowhead	0	0	0	0	0	0	0	0			
37	Pickereelweed	1	0	0	0	1	0	0	0	1	642	0.00
38	Arrow arum	1	0	0	0	1	0	0	0	1	642	0.00
39	Cattail	1	1	0	0	1	10	0	0	11	642	0.02
40	Bulrush	16	18	1	0	16	180	40	0	236	642	0.37
41	Iris	0	0	0	0	0	0	0	0			
42	Swamp loosestrife	1	0	0	0	1	0	0	0	1	642	0.00
43	Purple loosestrife	4	2	0	0	4	20	0	0	24	642	0.04
44	Phragmites	0	0	0	0	0	0	0	0			
45	Frogbit	0	0	0	0	0	0	0	0			
46	Slender spikerush	0	0	0	0	0	0	0	0			
47	Smartweed	0	0	0	0	0	0	0	0			
48	Water marigold	0	0	0	0	0	0	0	0			
49	American lotus	0	0	0	0	0	0	0	0			
50		0	0	0	0		0	0	0			

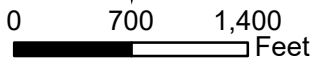
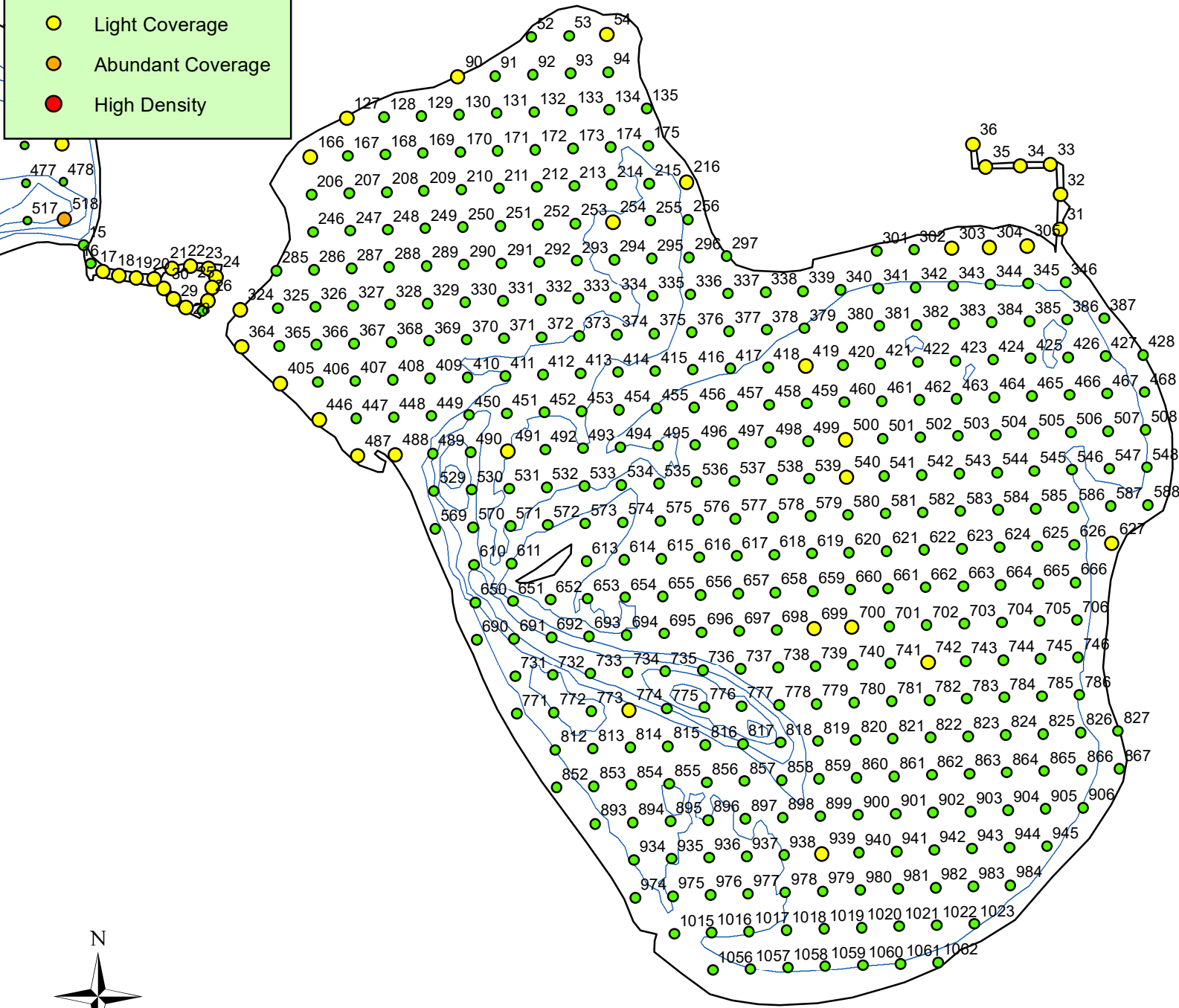
**Total cumulative cover**

**8.72**



### Density

- Sparse Coverage
- Light Coverage
- Abundant Coverage
- High Density



East Twin Lake  
828.5 Surface Acres  
Montmorency County Albert  
Township  
T29N R1E Sec 27,28,33,34



### Density

- Sparse Coverage
- Light Coverage
- Abundant Coverage
- High Density



0 750 1,500  
Feet

West Twin Lake  
1320 Surface Acres  
Montmorency County  
Alberta Township  
T29N R1E Sec 19,20, 28-32  
Otsego County Charleton

